

### EXTERIOR FINISH LEGEND

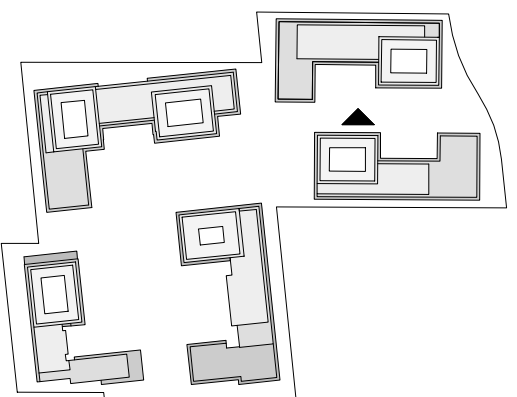
- PRE-CAST CONCRETE - BLACK HIGH SANDBLAST**  
COLOUR : BLACK  
MANUFACTURER : TBD  
STYLE : TBD
- PRE-CAST CONCRETE - GREY HIGH SANDBLAST**  
COLOUR : GREY  
MANUFACTURER : TBD  
SIZE/STYLE : TBD
- PRE-CAST CONCRETE - WHITE HIGH SANDBLAST**  
COLOUR : WHITE  
MANUFACTURER : TBD  
SIZE/STYLE : TBD
- PRE-CAST CONCRETE - GREY HIGH DEEPER SANDBLAST**  
COLOUR : GREY  
MANUFACTURER : TBD  
SIZE/STYLE : TBD
- PREFINISHED WINDOW WALL SYSTEM - VISION PANEL**  
EXT. COLOUR : TBD  
INT. COLOUR : TBD  
MANUFACTURER : TBD  
GLASS : TBD  
PAINT COLOUR : TBD
- PREFINISHED WINDOW WALL SYSTEM - OPERABLE AWNING**  
EXT. COLOUR : TBD  
INT. COLOUR : TBD  
MANUFACTURER : TBD  
GLASS : TBD  
PAINT COLOUR : TBD
- PREFINISHED WINDOW WALL - GLASS SPANDREL PANEL**  
EXT. COLOUR : TBD  
INT. COLOUR : TBD  
MANUFACTURER : TBD  
GLASS : TBD  
PAINT COLOUR : TBD
- PREFINISHED WINDOW WALL SYSTEM - METAL LOUVRES**  
EXT. COLOUR : TBD  
INT. COLOUR : TBD  
MANUFACTURER : TBD  
LOUVRES : TBD
- PREFINISHED CURTAIN WALL SYSTEM - VISION PANEL**  
EXT. COLOUR : TBD  
INT. COLOUR : TBD  
MANUFACTURER : TBD  
GLASS : TBD  
PAINT COLOUR : TBD
- PREFINISHED CURTAIN WALL SYSTEM - GLASS SPANDREL PANEL**  
EXT. COLOUR : TBD  
INT. COLOUR : TBD  
MANUFACTURER : TBD  
GLASS : TBD
- PREFINISHED CURTAIN WALL - METAL LOUVRES**  
EXT. COLOUR : TBD  
INT. COLOUR : TBD  
MANUFACTURER : TBD  
METAL PANEL : TBD
- ARCHITECTURALLY FINISHED CONCRETE SLAB COATING**  
EXT. COLOUR : OFF-WHITE  
INT. COLOUR : TBD  
MANUFACTURER : TBD  
METAL PANEL : TBD
- PREFINISHED ALUMINUM COMPOSITE PANEL**  
EXT. COLOUR : DARK GRAY  
MANUFACTURER : TBD  
SIZE/STYLE : TBD
- PREFINISHED ALUMINUM COMPOSITE PANEL**  
EXT. COLOUR : WHITE  
MANUFACTURER : TBD  
SIZE/STYLE : TBD
- MASONRY - BRICK VENEER / OR STONE FINISH**  
EXT. COLOUR : WHITE  
MANUFACTURER : TBD  
SIZE/STYLE : TBD
- EIFS - STUCCO**  
EXT. COLOUR : CLEAR WITH COATED PATTERN  
MANUFACTURER : TBD  
SIZE/STYLE : TBD
- BIRD FRIENDLY GLASS BALCONY RAIL**  
EXT. COLOUR : CLEAR WITH COATED PATTERN  
MANUFACTURER : TBD  
SIZE/STYLE : TBD

THESE DRAWINGS ARE NOT TO BE SCALED:  
ALL DIMENSIONS MUST BE VERIFIED BY CONTRACTOR  
PRIOR TO COMMENCEMENT OF ANY WORK. ANY  
DISCREPANCIES MUST BE REPORTED DIRECTLY TO SRN  
ARCHITECTS INC.

ADDITIONAL NOTES:  
THE DRAWING, AS AN INSTRUMENT OF SERVICE, IS  
PROVIDED BY AND IS THE PROPERTY OF SRN ARCHITECTS  
INC. THE CONTRACTOR MUST VERIFY AND ACCEPT  
RESPONSIBILITY FOR ALL DIMENSIONS AND CONDITIONS  
ON SITE AND MUST NOTIFY SRN ARCHITECTS INC. OF ANY  
VARIATIONS FROM THE SUPPLIED INFORMATION. SRN  
ARCHITECTS INC. IS NOT RESPONSIBLE FOR THE  
ACCURACY OF SURVEY, STRUCTURAL, MECHANICAL,  
ELECTRICAL, ETC. ENGINEERING INFORMATION SHOWN ON  
THIS DRAWING REFER TO APPROPRIATE ENGINEERS  
DRAWINGS BEFORE PROCEEDING WITH ANY WORK.  
CONSTRUCTION MUST CONFORM TO ALL APPLICABLE  
CODES AND REQUIREMENTS OF THE AUTHORITIES HAVING  
JURISDICTION (UNDERTAKEN OTHERWISE NOTED). NO  
INVESTIGATION HAS BEEN OR REPORTED ON BY THIS  
OFFICE IN REGARDS TO THE ENVIRONMENTAL CONDITION  
OF THIS SITE.

CONDITIONS FOR ELECTRONIC INFORMATION TRANSFER:  
ELECTRONIC INFORMATION IS SUPPLIED TO THE OTHER  
ASSOCIATED FIRMS TO ASSIST THEM IN THE PRECATION OF  
THEIR WORK/REVIEW. THE RECIPIENT FIRMS MUST  
DETERMINE THE COMPLETENESS/APPROPRIATENESS/  
RELEVANCE OF THE INFORMATION IN RESPECT TO THEIR  
PARTICULAR RESPONSIBILITY.

TOWN OF CALEDON  
PLANNING  
RECEIVED  
Feb.24, 2022



KEY PLAN 1:4000

NO.	DATE	REVISION COMMENT
1	Feb 28th 2021	OPA ZBA
2	Feb 15th 2022	OPA ZBA Rev 01

SRN ARCHITECTS INC SHALL NOT BE RESPONSIBLE FOR:  
1. ERRORS, OMISSIONS, INCOMPLETENESS DUE TO LOSS  
OF INFORMATION IN WHOLE OR PART WHEN INFORMATION  
IS TRANSFERRED  
2. TRANSMISSIONS OF ANY VIRUS OR DAMAGE TO  
RECEIVING ELECTRONIC SYSTEM WHEN INFORMATION IS  
TRANSFERRED

**SRN**  
ARCHITECTS  
8395 JANE ST, SUITE 202  
VAUGHAN, ONTARIO. L4K 5Y2  
PHONE: 905.417.5515 FAX: 905.417.5517

STAMP:  
  
© SRN ARCHITECTS INC. 2017

CLIENT:  
  
12599 Hwy 50 Ltd.

PROJECT:  
**MIXED USE DEVELOPMENT**  
12563 & 12599 HWY 50  
BOLTON - ONTARIO

DRAWING TITLE:  
**B3 - SOUTH ELEVATION**

DATE: Feb. 11, 2022 SCALE: As indicated

DRAWN BY: EM/FK CHECKED BY: EM/GR

PROJECT NUMBER: DRAWING NUMBER:

**S20023 A416**